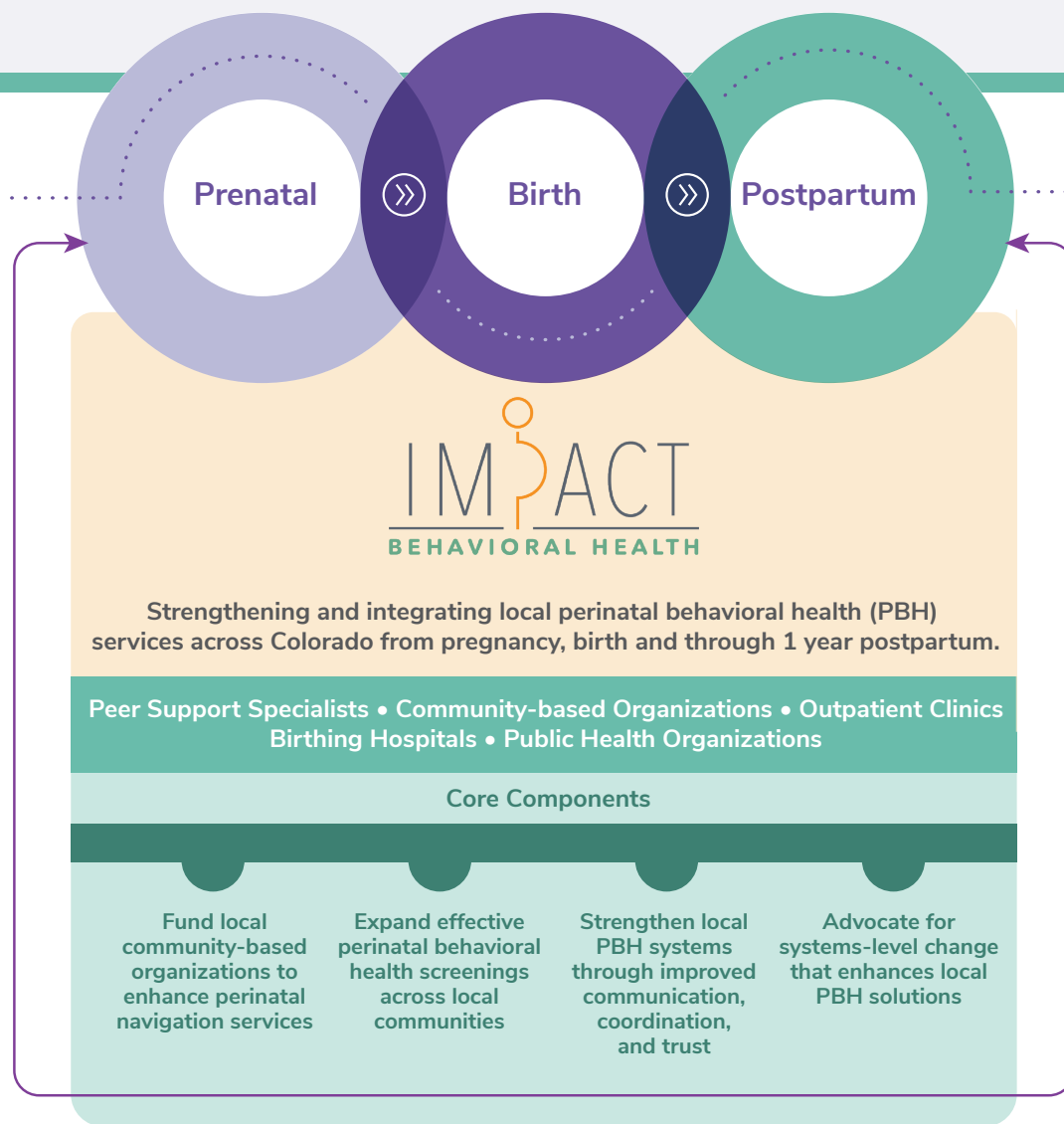


IMprove Perinatal Access, Coordination, And Treatment For Behavioral Health

SHORT-TERM INTERVENTION GRANT PROGRAM



PEER SUPPORT SPECIALISTS

Expand local perinatal mental health and substance use peer support services.

COMMUNITY-BASED ORGANIZATIONS (CBOs)

Enhance local perinatal navigation services offered by CBOs through training, technical assistance, and grant funding.

OUTPATIENT CLINICS

Help obstetric, pediatric, and primary care clinics improve perinatal mood, anxiety, and substance use disorder screening and referral practices.

BIRTHING HOSPITALS

Strengthen birthing hospital perinatal behavioral health screening, brief intervention, referral to treatment, connection to peer support, and initiation of medication for opioid use disorder practices.

PUBLIC HEALTH ORGANIZATIONS

Integrate local perinatal behavioral health continuums of care in partnership with local public health organizations to advance community-led PBH solutions.

IMPACT BH IN ACTION: STRENGTHENING AND INTEGRATING LOCAL PERINATAL BEHAVIORAL HEALTH SERVICES IN GARFIELD COUNTY

Garfield County, like many Colorado communities, struggled to connect perinatal people to vital local behavioral health services. Upon learning about IMPACT BH, Garfield community leaders decided to partner with CPCQC and the Colorado Behavioral Health Administration to strengthen and integrate their local perinatal behavioral health system. Together, partners provided perinatal behavioral health training to local healthcare providers and strengthened connections across local services.

OUR PARTNERS

IMPACT BH supported Garfield County work by convening five trusted partners spanning the perinatal continuum of care.

Each of these partners was already deeply embedded in the community, supporting birthing people in Garfield County throughout their journeys from pregnancy to postpartum. IMPACT BH enhanced these efforts by not only strengthening connections among these organizations but also improving care across the continuum through its resources, structure and technical assistance.

THE RESULTS

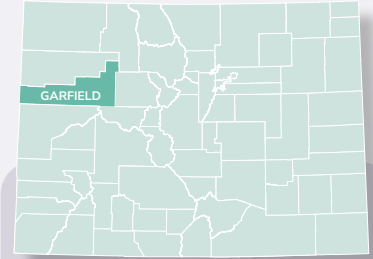
Together, Garfield County organizations participating in IMPACT BH:

- Provided bilingual and bicultural peer support, perinatal navigation, or home visiting services to at least 873 families from July 2023 to June 2024;
- Trained 22 staff from local community-based organizations to become peer support specialists;
- Established a Perinatal Continuum of Care (PCOC) group including representatives from primary care clinics, hospitals, community-based organizations, public health agencies, behavioral health providers and others;
- Supported the local birthing hospital, Valley View, in screening more than 90% of its Labor & Delivery unit patients for perinatal behavioral health challenges.

IMPACT BH supports the sustainability of local perinatal behavioral health solutions beyond the grant period. At the conclusion of Garfield County's participation, both community-based organizations secured additional funding for maternal behavioral health or care coordination efforts. Both outpatient care clinics transitioned to Prenatal Plus, a Colorado Medicaid program designed to provide comprehensive support for pregnant Medicaid members at risk of adverse maternal and infant health outcomes. Valley View Hospital remains engaged in perinatal substance use disorder quality improvement programs led by CPCQC.

KEY TAKEAWAYS

- Engagement across local perinatal continuums of care is essential to ensuring parents receive the care they need when they need it, in a setting that is appropriate for them.
- Community-based providers benefit from professional development opportunities focused on perinatal mental and behavioral health. Providers such as perinatal navigators, peer support providers, and home visitors often encounter concerns about perinatal mood and anxiety or substance use disorders from their clients. However, they are typically not trained to offer clinical services and may not know how to support their clients' behavioral health care needs. Professional development opportunities focused on perinatal mood, anxiety, and substance use disorders can equip essential community-based providers with the knowledge and skills they need to help pregnant people and new parents thrive.



THANK YOU PARTNERS

Valley Settlement

A grassroots organization providing early childhood and parent engagement programs created by and for immigrant families in the Roaring Fork Valley

Great Expectations

One of Colorado's first home visiting agencies serving Roaring Fork Valley families who have young children or are expecting a child

Pediatric Partners

A Glenwood Springs-based pediatric practice

Women's Health

at Valley View

An outpatient OB-GYN clinic

Valley View Hospital

A nonprofit community hospital in Glenwood Springs with a Labor & Delivery unit and NICU